

SHAREATE

QUALITY WINS RESPECT

品质成就尊贵

Ti(C,N)-Based Cermet
碳氮化钛基金属陶瓷

苏州新锐合金工具股份有限公司
SHAREATE TOOLS LTD.



Manufacturing and Testing Equipment 生产及检测设备

公司拥有大量国内外先进的生产制造及检测设备，并独立形成了设计、开发、生产和服务的产品质量保证模式。

The company has a variety of domestic and imported advanced manufacturing and testing equipment and established quality assurance model for design, development, production and service independently.

Company Profile 公司简介

苏州新锐合金工具股份有限公司是一家专注于硬质合金制品与矿用凿岩工具及矿山服务，集研发、制造、销售、服务为一体的国际化制造服务商，在苏州和潜江均有生产基地，下设工程工具事业部、硬质合金事业部、型材事业部、武汉新锐合金工具有限公司等多家分、子公司。公司于2015年12月正式登陆新三板，并首批进入创新层。

公司通过了API及ISO9000质量体系和产品双认证，并先后通过“江苏省企业技术中心”、“江苏省高新技术企业”、“江苏省高效凿岩工具工程技术研究中心”以及“高端超细硬质合金材料工程技术研究中心”“江苏省两化融合示范企业”等认定，产品获得“江苏省名牌产品”、“江苏省高新技术产品”称号以及“国家标准合格单位、质量跟踪重点保护产品”证书。

公司主要产品包括：矿用钻头、油用和矿用硬质合金齿、金刚石复合片用基托、硬质合金棒材、石油耐磨零件、金属陶瓷棒材、金属陶瓷刀片、金属陶瓷板料产品等。产品远销澳大利亚、秘鲁、智利、日本、韩国、美国、巴西、俄罗斯、墨西哥等二十多个国家和地区，并且与多家国际知名企业建立了长期稳定的业务关系。

Shareate Tools Ltd. classified as a national high-tech enterprise, is a professional company which integrates the design, development, manufacturing and sales of cemented carbide products and drilling tools. We have two manufacturing bases, which are located at Suzhou and Qianjiang, both with the world-class advanced production and inspection equipment and the state-of-the-art and continuously expanding R&D and manufacture base for Cemented carbide and drilling tools in China. We landed on the new over-the-counter market in December 2015 and entered the innovation layer.

Shareate Tools Ltd. possesses the strength of technical innovation and has formed the systematic proprietary intellectual property rights and technology. We passed ISO quality system certificate and API certificate in 2001 and 2008 respectively and maintain both of the certificates ever since. Currently, we have gained 35 authorized patents, in which 14 innovation patents, and 40 items of proprietary technology. The established Jiangsu Technology Center and Jiangsu Engineering & Technological Research Center will be laying the firm foundation for our continuous innovation.

Our main product covers compacts for oil, buttons for mining, carbide substrate for PDC cutters, Nozzle for oil bit, ultra-fine cemented carbide round rods, powder metallurgy mold, wearing resistant parts and cermets cutting tools, blanks and non-standard parts and so on, which are exported to over 10 foreign countries and regions such as Japan, South Korea, USA, Canada, Australia and Russia where the products are very popular and well evaluated by customers and drilling tools in China.



干带压机 Dry Bag Cold Isostatic Press



生产车间 Production Workshop



扫描电镜/能谱仪 SEM / EDS



热压烧结炉 Hot Pressing Sintering Furnace



总碳仪 Total Carbon Analyzer

Introduction of Ti(C,N)-based Cermet

Ti(C,N)基金属陶瓷介绍

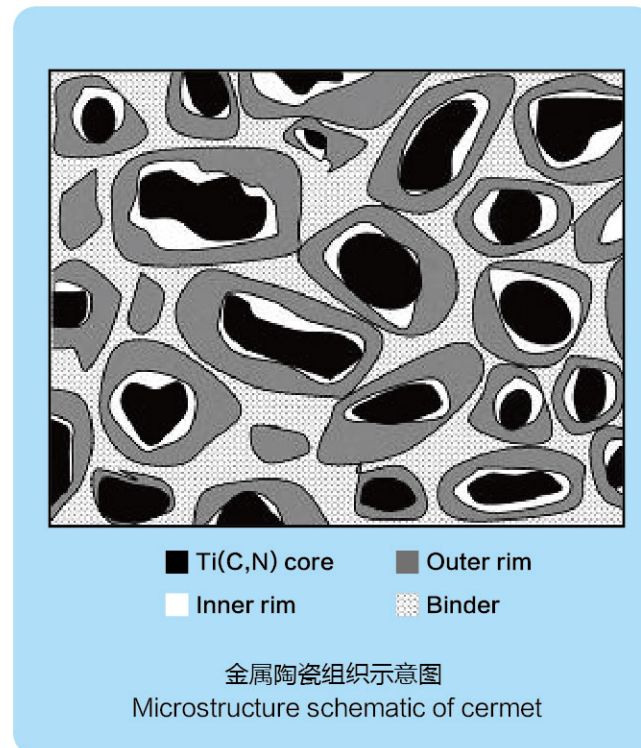
Cermet Grades

金属陶瓷牌号

定义及特征 / Definition

Ti(C,N)基金属陶瓷是一种由陶瓷硬质相(氮化钛)与金属粘结相(Mo,Ni)组成的复合材料, 它既具有陶瓷材料的高硬度、高耐磨、耐腐蚀以及抗高温氧化的性能特点, 同时还兼具金属材料较好的韧性。

Ti(C,N)-based cermet is a kind of composite material consisting of ceramic particles bonded with a metal binder phase, which combines the favorable properties of ceramics (high hardness and wear, corrosion and high-temperature oxidation resistance) with those of metals (toughness especially).



应用领域 / Application area

Ti(C,N)基金属陶瓷独特的理化性能可使其广泛用作数控刀具、3C模具、各类高温耐磨零部件以及电缆和化纤行业用特殊切断刀等。

The unique physical and chemical properties of Ti(C,N)-based cermets makes it a promising material for cutting tools, 3C molds, high temperature wear-resistant parts and special cutting blades for cables and chemical fibers, etc.



ST20

牌号Grade	ST20	特征 Feature	密度低、强韧性好, 红硬性高, 化学稳定性好, 同时还具有优异的高温抗氧化性能, 切削加工过程中不易产生积屑瘤。 It has low density, high strength, high hot hardness, good chemical stability and excellent high temperature oxidation resistance. It is hard to form built-up edge in cutting process.
密度Density	6.20 g/cm ³	用途 Applications	适用于碳钢、合金钢、铸铁、不锈钢和钛合金等难加工材料的高速精加工和半精加工, 被加工工件表面非常光洁、平整。 Suitable for high speed finishing and semi-finishing of carbon steel, alloy steel, cast iron, stainless steel, titanium alloy and other difficult-to-machine materials with excellent surface finish.
硬度Hardness	92.0 HRA		
抗弯强度T.R.S	3000 MPa	显微组织 Microstructure	
断裂韧性K _{IC}	9.8MPa·m ^{1/2}		
孔隙度Porosity	A02		
	B00		
	C00		

ST30

牌号Grade	ST30	特征 Feature	兼具高韧性和高耐磨性, 同时还拥有优异的耐腐蚀性能。 A grade with both high fracture toughness and good wear resistance, as well as excellent corrosion resistance.
密度Density	6.60 g/cm ³	用途 Applications	适用于腐蚀性环境下对强韧性要求较高的工况, 如电力、石化、机械、纺织、造纸等行业用切刀、密封件等。 Suitable for corrosive environment with high requirement of strength and toughness, such as cutting knives, seals for electric power, petrochemical, machinery, textile and paper industries, etc.
硬度Hardness	88.0 HRA		
抗弯强度T.R.S	2800 MPa	显微组织 Microstructure	
断裂韧性K _{IC}	18 MPa·m ^{1/2}		
孔隙度Porosity	A02		
	B00		
	C00		

ST25

牌号Grade	ST25	特征 Feature	具有优异的高温抗氧化性、耐腐蚀性和抗热震性能, 在循环热冲击作用下可长久保持较好的尺寸稳定性。 It has excellent high temperature oxidation resistance, corrosion resistance and thermal shock resistance, and can maintain good dimensional stability under cyclic thermal shock for a long time.
密度Density	6.90 g/cm ³	用途 Applications	3D玻璃热弯机用均热板及其他领域高温模具 Heating transfer plate of 3D glass hot bending machine and other high-temperature molds.
硬度Hardness	87.0 HRA		
抗弯强度T.R.S	2300 MPa	显微组织 Microstructure	
800℃热导率 Thermal conductivity	30 W·m ⁻¹ ·K ⁻¹		
400-800℃热膨胀系数 coefficient of thermal expansion	9.0×10 ⁻⁶ /℃		
800℃比热容 Specific heat capacity	510 J·kg ⁻¹ ·℃ ⁻¹		
800℃氧化增重 Oxidation increment	0.02 mg·cm ⁻² ·h ⁻¹		

Cermet Rods

金属陶瓷棒材

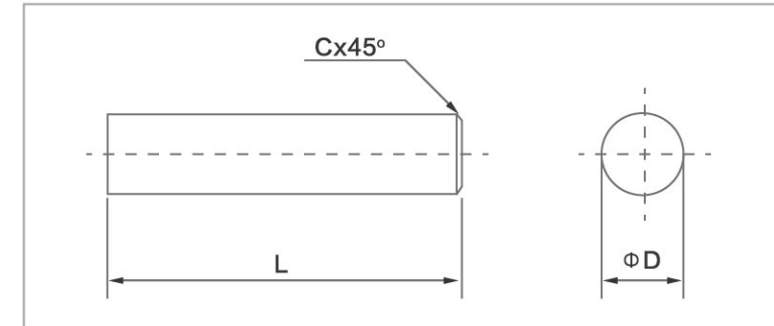
产品描述 / Product Description

新锐ST20牌号是一款全新的高氮无钴Ti(C,N)基金属陶瓷材质，不仅具有较高的强韧性和耐磨性，而且高温抗塑性变形能力强，用作切削刀具时与工件间的摩擦系数低，被加工工件表面光洁度高，综合性能优于国内外同类金属陶瓷和常用硬质合金，刀具使用寿命明显更长。

Shareate ST20 is a new cobalt-free cermet grade with high nitrogen content. It not only has high strength, toughness and good wear resistance, but also shows superior thermal deformation resistance at high temperatures. When used as a cutting tool, the friction coefficient between cermet and workpieces is low and result in excellent surface finish. The comprehensive performance of Shareate ST20 is better than that of other cermets and cemented carbides and has a much longer tool life.



规格尺寸 / Size



根据客户需求提供金属陶瓷定常毛坯或精磨棒料，常规尺寸如下：

Shareate can provide different sizes of rough or grinding rods according to customers' requirements. The standard sizes included below:

单位Unit: mm

尺寸 Size			直径精度 Diameter precision	
直径(ΦD)	长度(L) (公差Tol.+0.5/+1.0)	精磨倒角尺寸 Grinding chamfer size(C) (公差Tol. ±0.1)	毛坯 Rough	精磨 Grinding
3	0~150	0.3	+0.3/+0.5	h6
4	0~150	0.4	+0.3/+0.5	
6	0~150	0.4	+0.3/+0.6	
7	0~150	0.5	+0.3/+0.6	
8	0~150	0.6	+0.3/+0.6	
10	0~150	0.6	+0.3/+0.6	
12	0~150	0.8	+0.3/+0.6	
14	0~150	0.8	+0.3/+0.7	
16	0~150	0.8	+0.3/+0.7	
18	0~150	0.8	+0.3/+0.7	
20	0~150	1.0	+0.3/+0.7	

Cermet Heating Transfer Plate

金属陶瓷均热板

产品描述 / Product Description

新锐ST25牌号金属陶瓷均热板是专门针对3D玻璃热弯机高温成型作业所开发的一款全新材质。相对于传统钨钢材质均热板，金属陶瓷均热板具有更高的硬度和极优异的高温抗氧化性能，在高温热压工况下温度偏差小，导热更加均匀，并且只有微量变形量(0.02-0.03mm)，使用寿命明显延长。

Shareate ST25 Cermet heating transfer plate is a brand-new grade specially developed for 3D glass hot bending machine. It has much higher hardness and excellent high-temperature oxidation resistance when compared with other tungsten carbide. During the high temperature hot pressing operation, the temperature deviation of Cermet heating transfer plate is small, heat conduction is more uniform and the deformation is also small (0.02-0.03mm). Therefore, the service life of Shareate ST25 is obviously longer than other traditional heating transfer plates.

◆ ST25与传统均热板性能对比

Comparison between ST25 and other traditional normal heating transfer plate

牌号 Grade	密度 (g/cm ³)	硬度 (HRA)	抗弯强度 (MPa)	800℃热导率 (W·m ⁻¹ ·K ⁻¹)	400-800℃ 热膨胀系数 (X10 ⁻⁶ /℃)	800℃比热容 (J·kg ⁻¹ ·℃ ⁻¹)
ST25	6.9	87.0	2300	30	9.0	510
YG6合金	14.8	89.5	1450	32	4.6	210
310S	7.9	71.5	900	18	16	530
SiC陶瓷	3.2	86.0	600	40	5.0	230

◆ ST25与钨钢均热板高温抗氧化实验

High temperature oxidation test of ST25 cermet and cemented carbide plates

材质 Material	硬质合金 Cemented Carbide		金属陶瓷 Cermet	
试验条件 Test conditions	空气环境下加热到850℃保温24h Heating in the air condition of 850℃ for 24h.			
形貌 Appearance	常温	850℃	常温	850℃
				
氧化增量 Weight gain (mg·cm ⁻² ·h ⁻¹)	0	10.12	0	0.02
结果 Test results	氧化严重，体积明显膨胀并向各方向剥落 Oxidized seriously, and expanded in all directions or even peeled off.		基本无明显变化 Without obvious surface change.	

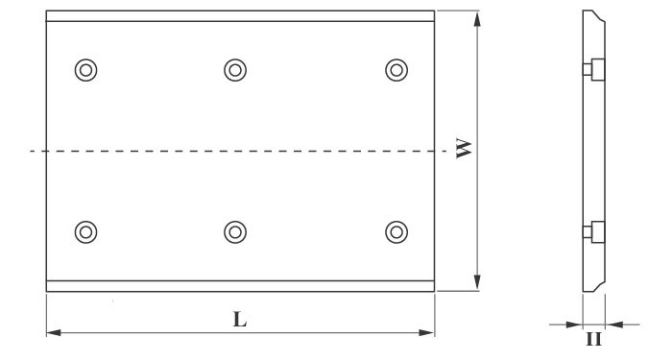
规格尺寸 / Size

金属陶瓷均热板的尺寸可根据3D玻璃热弯机设备厂商的要求定制生产，目前常规尺寸主要如下：

The size of Cermet heating transfer plate can be customized according to the specification of 3D glass hot bending mould, the standard sizes included below:

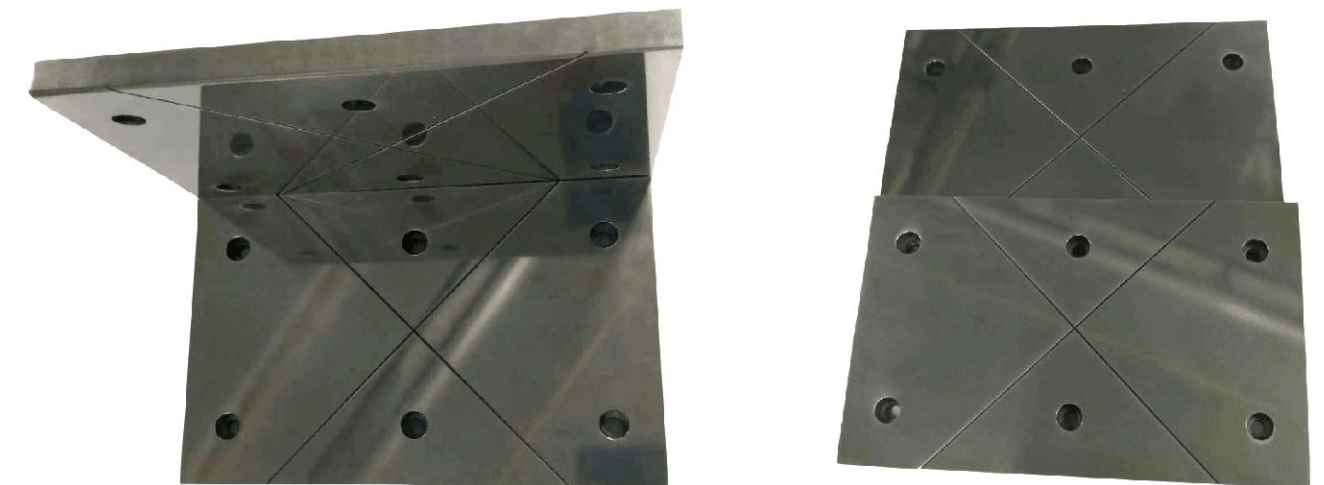
单位 Unit: mm

长度 (L)	宽度 (W)	高度 (H)
200	125	12
200	130	12
200	135	12
200	138	12
200	146	12



✦ 还可按照图纸尺寸加工定位孔和提供工作面抛光处理。
Also can provide final products with location holes and polished surfaces.

产品展示 / Production Display



 所有产品均为100%实拍
PRODUCT DISPLAY

Non-standard Cermet Products

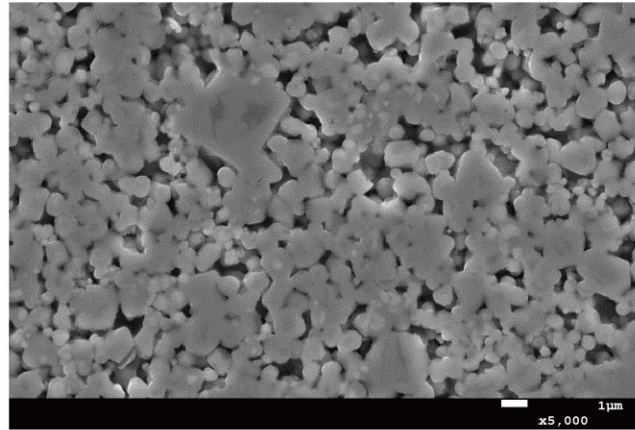
金属陶瓷异型件

产品描述 / Product Description

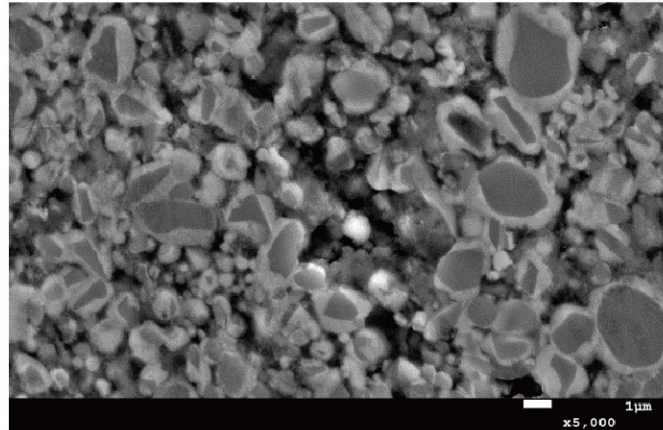
新锐ST30牌号的Ti(C,N)基金属陶瓷材质兼具较高抗弯强度、硬度和断裂韧性，同时还拥有极好的耐腐蚀性能，是一款适合于耐冲击和耐腐蚀工况的理想材料，可以广泛应用于电缆切刀、化纤切刀及各类耐磨零件等异型产品。

Shareate ST30 Ti(C,N) based cermet grade has high transverse rupture strength, hardness and fracture toughness, as well as excellent corrosion resistance. It is an ideal material for impact-corrosion working condition, which can be widely used as cable cutting tools, chemical fiber cutting tools, various abrasion resistant parts and other non-standard products.

新锐ST30与传统含钴金属陶瓷耐冲蚀腐蚀实验表面形貌 / Erosion-corrosion resistance tests of ST30 and cobalt-containing cermet .

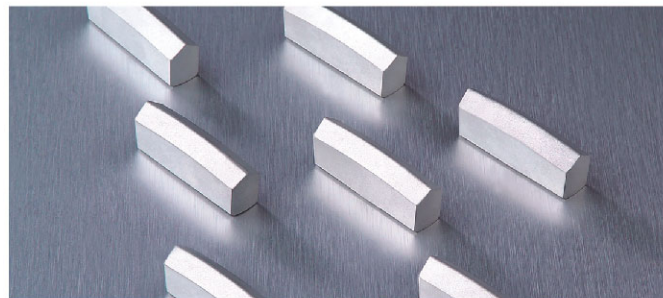


ST30 Cobalt-free cermet



含钴金属陶瓷Cobalt-containing cermet

产品展示 / Production display



金属陶瓷非标定制 / Non-standard Customize Service

苏州新锐合金工具股份有限公司拥有强大的新产品开发能力，在金属陶瓷材料的研究和应用中，有着非常深厚的技术沉淀，可协助客户制造出适应不同工况的可靠的金属陶瓷产品。

We have a strong capability of new product development, our knowledge and technology of cermet material derived from many years' research and application, and willing to cooperate with customers to manufacture reliable cermet products suitable for different working conditions.

金属陶瓷注意事项 / Notes

- ◆ 金属陶瓷在后加工过程中要充分冷却，避免因冷却不到位导致材料热量集中出现热裂纹；
- ◆ 金属陶瓷在切削应用中建议干切或风冷；
- ◆ 金属陶瓷加工参数同常规硬质合金材质差异较大，具体可咨询我司工程师。
- ◆ Cermet should be fully cooled during post-processing to avoid thermal cracks;
- ◆ Cermet are recommended for dry cutting or air cooling in cutting applications;
- ◆ The processing parameters of cermet are quite different to carbide materials, for more details please call our engineers.



SHAREATE

苏州新锐合金工具股份有限公司
SHAREATE TOOLS LTD.

地址：江苏省苏州市工业园区唯西路6号
Add: No.6 Weixi Road, Industrial Park, Suzhou, Jiangsu. 215121, China.
电话(Tel): +86 512 62381782 Fax: +86 512 62851196

* 未经许可不得对本宣传册的内容进行复制、转载。
The contents of this brochure may not be reproduced or reproduced without permission.



新锐股份